



# ARBOR BIO KAPS™

Healthy Arbor Endotherapy Technology Way

## HS Palm Tree Pipe



Case Study in Lanciano City  
*(red palm weevil attack)*

rev. 2 update after 65 days



# HS Palm Tree Pipe

## Introduction

- Description Endotherapy Present Situations
- Description of ArborBioKaps Technology
- Organization in the stems of palms and trees
- Description of Lanciano City Case Study
- Images/Results of test
- Scheme of Palm Tree Installation
- Conclusion and note



# HS Palm Tree Pipe

## Description Endotherapy Present Situations

In recent years the use of endotherapy trees is very increased.

To execute this type of treatment should be performed few holes on the trees, after which the plastics capsules or steel needles are inserted inside the holes to inject the medicinal and curative solution for the tree.

After application of the medicine or curative solution can have the following results:

- 1 - plastic insert fixed in the tree
- 2 - hole where the injection point, which remains open.

In the first case the plastic insert will always remain within the tree and there will be an incompatibility between the polymeric part of the capsule and the wood part tree. The tree will consider this capsule as a foreign body and will do anything to isolate it. Action that will lead to a weakening of the area around the plastic capsule

In the second case, even if the hole is perfectly disinfected, the permanence of the disinfectant is not long until the complete closure of the hole left open. At this point you have a weak area subject to possible external contamination.



# HS Palm Tree Pipe

## Description of ArborBioKaps Technology

ArborBioKaps is a patented product.

ArborBioKaps is a special biodegradable capsule.

ArborBioKaps is produced with hydrosoluble polymer.

The stage of hydrosolubility can be regulated.

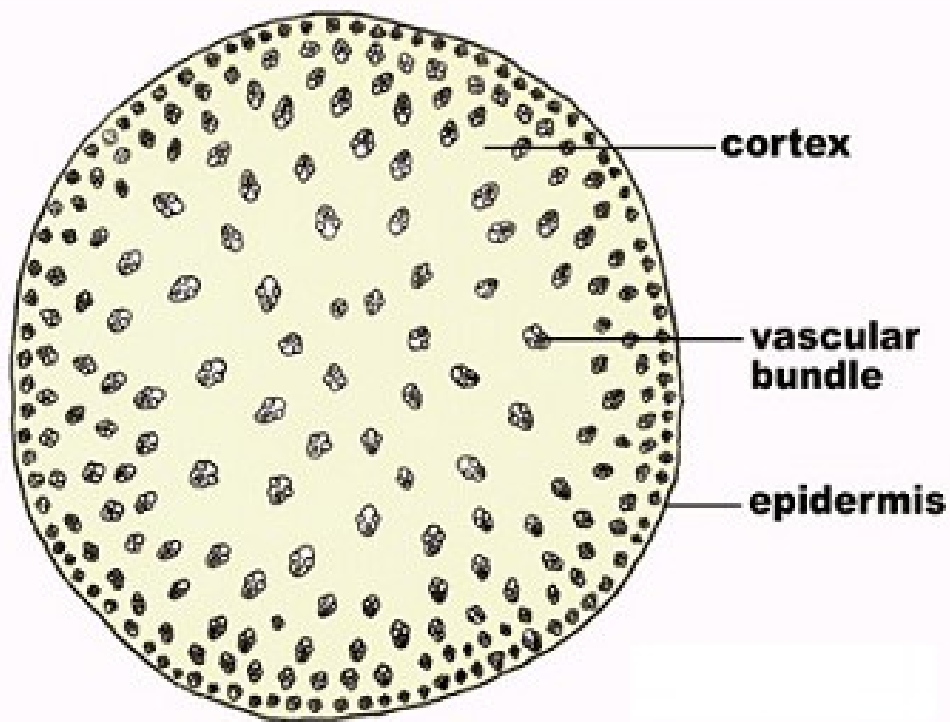
This hydrosolubility transforms the ArborBioKaps in a semi-liquid paste that remains inside for the tree and decreases as that closes the hole through the normal activities of cicatrization shaft.

Inside the ArborBioKaps there is a natural antibacterial additive, not hydrosoluble but always biocompatible, which ensures antibacterial activity and anti fungi until the perfect cicatrization of the hole.

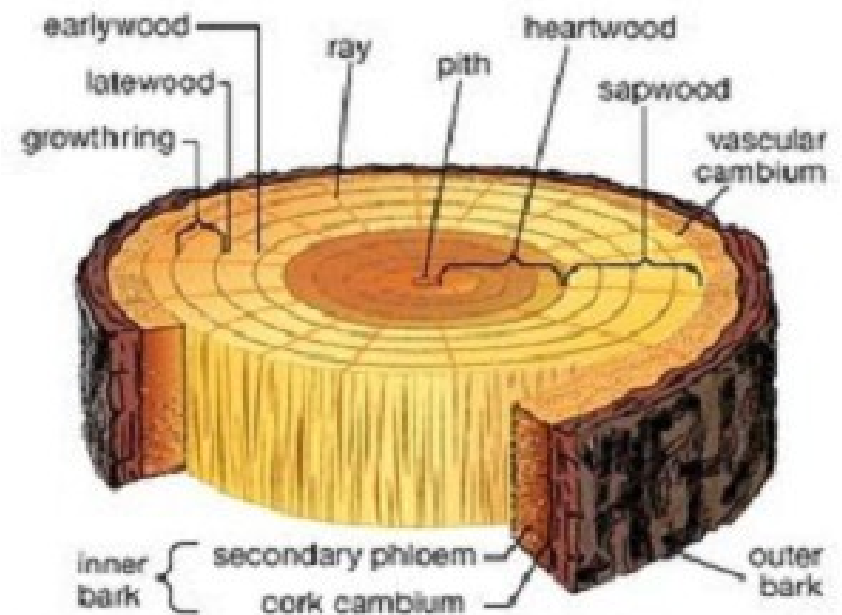
*ArborBioKaps is not produced with biopolymers because the biopolymer degrades through the action of micro-organisms and bacteria.*

# HS Palm Tree Pipe

Organization in the stems of palm trees and ornamental trees



Palm Trees



Ornamental Trees



# HS Palm Tree Pipe

## Description of Case Study in Lanciano City

### Phase 1

Select a Palm with red weevil attack

### Phase 2

Inserted nr. 3 ArborBioKaps HS Palm Tree Pipe inside palm RPW infested

### Phase 3

Inject pesticide (imidacloprid), 50 ml each HS Palm Tree Pipe

### Phase 4

Look results after 65 days from injection



# HS Palm Tree Pipe

Phase 1



**red palm weevil attack  
start condition**



# HS Palm Tree Pipe

Phase 1



**Red Pal weevil attack  
Start condition**





# HS Palm Tree Pipe

Phase 1



**Red Pal weevil attack  
Start condition**



# HS Palm Tree Pipe

## Phase 2





# HS Palm Tree Pipe

Phase 2





# HS Palm Tree Pipe

Phase 3



**Pesticide Injection**



# HS Palm Tree Pipe

Phase 4



**AFTER 55 DAYS  
FROM TREATMENT**



# HS Palm Tree Pipe

Phase 4

**AFTER 65 DAYS  
FROM TREATMENT**



# HS Palm Tree Pipe

## Phase 4



# HS Palm Tree Pipe

## Phase 4



**LARVA DEAD**



**RED PALM WEEVIL DEAD**





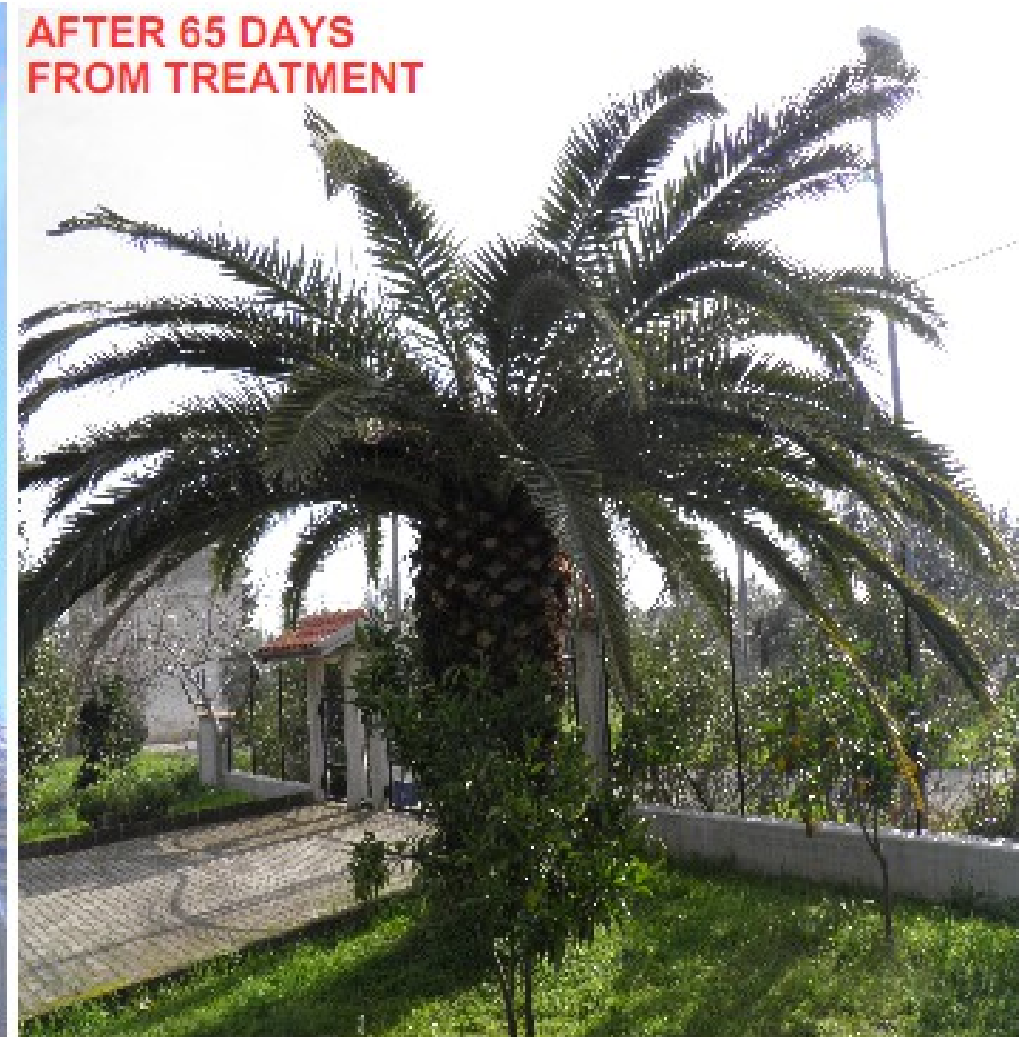
# HS Palm Tree Pipe

## Comparison

**red palm weevil attack  
start condition**



**AFTER 65 DAYS  
FROM TREATMENT**





# HS Palm Tree Pipe

**Where it can be Applied**

**All types of Palm Tree**



# HS Palm Tree Pipe

## SCHEME OF PALM TRUNK INSTALLATION

**ArborBioKaps with Valve  
Necessary to fill HS Palm  
Tree Pipe will dissolve  
in 8/12 months\***



**HS Palm Tree Pipe after filled by pesticides or Nutrients substances  
will melt at 100% inside palm tree stems**

*\*time depending from weather condition and from speed sap absorption from all different kind of Palm*



# HS Palm Tree Pipe

## CONCLUSION

ArborBioKaps HS Palm Tree Pipe is unique solution to introduce liquid substances into the Palm Tree by injection instruments with follows advantages:

- 1 – 100% assurance absorption of substances to all line of hole after dissolved of Pipe
- 2 – 100% closed substance into Palm tree trunk
- 3 – nothing visual appearance (nothing apparatus appended outside trunk)
- 4 – safety to worker and citizen
- 5 – covered against bacteria and fungi through antibacterial additive inside ArborBioKaps

then.....



# HS Palm Tree Pipe

**SAVE YOUR PALM TREES WITH**



**100% FRIENDLY SOLUTION, 100% SAFETY SOLUTION, 100% FAST SOLUTION  
100% NICE AESTHETIC SOLUTION, 100% LESS INVASIVE TRUNK SOLUTION**



# HS Palm Tree Pipe

**SAVE WITH**





**Stefano Corinaldesi**

email: [info@arborbiokaps.com](mailto:info@arborbiokaps.com)

mobile: +39 334 8702503